



## **Simi Settlers' Amateur Radio Club**

# **Short Circuit**

### **Inside this Issue**

- 1** Timely Information and the President's message
- 2** Nets of Interest  
ACS/ARES Corner
- 3** Member Updates
- 4** The Market Place
- 5** Simi Settlers' Leadership
- 6** Membership Form

The next Simi Settlers club meeting is  
**Thursday February 10** at 7:00 PM  
Simi Senior Center  
(Enter by the Southwest door)  
3900 Avenida Simi, Simi Valley.

The next Simi Settlers Pizza Night is  
Toppers Pizza, 2408 Erringer Rd, Simi Valley  
**Thursday February 3** at 6:00 PM

**Note:** The Senior Center has new rules. Please read and follow them. This is a one time requirement.

All people entering the center **MUST** be registered with the center.

This is to be done by filling out the form available at the center. You will be given a small token to use when entering the center.

The wearing of masks is unknown at this time. Bring one just in case it is required.

Refreshments will be limited to personal water brought by individuals.

This is being done to ensure knowledge of everyone entering to enable tracking info in case of someone has the virus. Also this will provide an accurate headcount for the center.

February 2022

## Nets of Interest

Sunday	Monday	Tuesday	Wednesday	Thursday	Friday	Saturday
<b>LSB Net</b> 8pm 3.908 MHz  <b>SSARC 2 Meter Net*</b> 8:30 pm SMRA-ERN Repeater 146.805 -0.6MHz PL100.0 or 445.580 -5.0MHz PL100.0  The Newbie net 7 pm, Bozo Repeater 147.885 ( – 127.3)	<b>Condor Connection</b> 7pm (Plays Newslane) Frazier Mountain 224.720-1.6 MHz PL156.7	<b>LSB Net</b> 8pm 3.908 MHz  <b>ACS Area 1</b> Simi Valley SMRA-ERN 7:05pm Repeater 146.805 -0.6MHz PL100.0 or 445.580 -5.0MHz PL100.0  <b>ATN-CA Net</b> 7:30pm <a href="http://atn-tv.org/netnight.htm">http://atn-tv.org/netnight.htm</a>  <b>ACS Area 1</b> Simplex net, 6:45 PM on 145.510MHz	<b>Channel Islands chapter 10-10 International</b> 28.34 MHz at 10AM and 6PM  <b>Mesh VOIP Net*</b> 8pm 2.4/5.8 GHz Mesh	<b>LSB Net</b> 8pm 3.908 MHz		<b>SSARC SSB HF Net</b> 8:30am <b>7.240</b> (+ or - QRM/N) 40 meter  <b>CW-QRP</b> 9am 7.032 MHz  <b>Quad Squad net</b> 1PM on 21.365 MHz's

Additional information on local nets can be found on the CVARC web site at: <http://www.cvarc.org>

\* For more information, see <http://www.pvarc.club/mesh/mesh-applications/>

### Sunday Night Net Control Operators

Thanks to our fine Net Control Operators: Steve, KE6WEZ; Rick, W6DQE; Ray, KI6LKD; Jay, AG6JF, Brian KM6MIN and Dante, KK6JCQ.

### ACS/ARES Corner

**We are always looking for ACS members that would like to become Net Controllers.** You will receive hands-on training at the Simi Valley PD (where we normally conduct the Weekly Net). It is both fun and at times challenging. You will gain valuable experience in running a controlled Net as well as becoming more than just familiar with the equipment in the Radio Room at the PD. If you would like to volunteer for this, let me know - AB6BW1@gmail.com

If anyone is interested in how to set up your own packet station, RMS Winlink station, or a Mesh Node, let me know and we can get you started in the proper direction.

**Barry K6ZA** wants to remind everybody that they have options to check in with something other than a 2 meter handheld. The **80 meter net is Tuesday nights at 18:30 (6:30 PM) on 3.987 MHz.**

**NOTE:** Please be advised that we hold the Tue. countywide net at 19:30 (7:30PM) on the Sulphur Mountain WD6EBY repeater 145.200, minus 600 KHz offset, CTCSS of 127.3. Until further notice, this will be our standard frequency for countywide communications.



Bill Woods AB6BW AB6BW1@gmail.com

February 2022

## Updates From Our Members:

### An ARES Snapshot from Eric KE6MLF

Attended the weekly ARES net with Frank, KI6OQ at the Simi Police EOC shack.  
Snug accommodations:



### An Antenna Update from Eric KE6MLF

Danged Antennas! Had problems the past few months with the mobile radio in my truck. The antenna was a 20 + year old Cushcraft dual band mag mount. Seemed to work, but performance had gotten to where I could not reliably get to some of the repeaters anymore.

I looked at the magnetically attached NMO roof mount antenna base, and saw the bottom cable attachment was quite crusty. I cleaned up the mount with a new coat of paint, replaced the coax cable, and put a drop of deox corrosion protection on the electrical contacts. Performance was no better! I found my VHF / UHF SWR meter, and connected it up with a jumper cable. The 2 meter section SRW was HUGE, and the 70 cm section was 1.5 to 1. With a bit of poking and prodding, it turns out the coil between the two sections of the antenna whip had **opened up**. I already had a few items in my Amazon shopping basket, and on a whim I added a Tram dual band NMO mount whip.

Installed the new antenna on the refurbished mount, and SWR on both bands is now under 1.1.  
**Good performance restored!** Sometimes old stuff is just broken, and has to be replaced.

February 2022

## Are you on QRZ? by Eric KE6MLF

You can go to [www.qrz.com](http://www.qrz.com) and set up a little blurb about yourself. This is a good way for others to find your address or email. As seen below, my email can be shown if a **verified** user logs in. To get started, go to qrz.com and click on the link to create a new account. After it is verified to match with your FCC data, you can log in and add any text or pictures about yourself. I have never received spam or unwanted offers due to the verification process other users have to go through.

Note the last bit, "Not buying or selling anything". This has caught scammers trying to buy or sell on the **swapmeet** section using your persona. I also read and post in the **forums** section for hints and help.

**KE6MLF**



**Eric M Oberg**

1449 Mellow Ln  
Simi Valley, CA 93065  
USA

*Email: Use mouse to view..*

Ham Member

Lookups: 1010

Label

Biography

Detail

Logbook

Hi from Simi Valley, California.

I have a Yaesu FT-847 with LDG AT11-MP autotuner.

Backup radio is a Heathkit SB-102 with the full SB accessory lineup.

For Antennas, I have a G5RV, Hustler 5BTV, 6m, 2m, and 70cm J-poles.

Have a Bitx40 with Sotabeam dipole. Newest project is Mesh radio.

Playing with 2 meter transmitters for model rocket RDF, both morse code and GPS.

Not buying or selling anything.

9375490 Last modified: 2019-02-01 23:04:52, 468 bytes

February 2022

## A day out with Orv, W6BI by Eric KE6MLF

Went out on the 29th to one of the local peaks for a bit of maintenance at a repeater site. As usual:

- Drive to Orvs house and load parts, tools, and equipment
- Drive to the gate at the base of the hill, meet the other guy(s)
- Drive up some less than good road
- Park and unload tools, layout parts, equipment, spare bits and pieces...
- Climb on top of the site and sit in the wind / sun / hot / cold while you drag things up (or down), bolt on new antennas (or take down old), run cables
- When the guys in the shack get connectivity, get all the leftover parts, tools, and equipment down
- Load up the cars and drive back home for a snack and beverage!



This is Justin, K6BFG, and Orv, W6BI getting cables and parts ready for installation.

February 2022



The site, with a whole lot of antennas for such a tiny metal box. The “shack” sits on the base of an old fire watch tower.

February 2022

## FT8 Operation By Ron Nelson K6RIN

Last month I reported on a SOTA activation that I did on Pacifico Mountain. That activation included my first portable operation on FT8. I've been exploring the possibility of operating FT8 for the better part of a year. I finally decided that I had done enough exploring and it was now time to actually do it. I first set up my home station to work FT8. This consisted of an Icom IC-7300, transmitting about 50 watts into a dipole antenna. The radio was hooked up to a laptop running WSJT-X software. The software is a free download. I was pleasantly surprised at the results. There are hundreds of hams around the world on FT8. In fact, 20 meters is very difficult to find a clear operating frequency, so I have enjoyed operating on 15 and 17 meters.

FT8 is a digital mode of communication. In order to work properly, the computer's clock has to be perfectly sync'd with the rest of the computers that are communicating together or the system will not work. This was a point of frustration until I finally figured out the computer's clock situation. Microsoft Windows provides a simple process to sync the date and time. The radio is set to specific frequencies for each band. 7.074 MHz is used on 40-meters, 14.074 MHz on 20-meters, 21.074 MHz on 15-meters, 18.100 MHz on 17-meters. The computer program offers a waterfall display where all the signals can be seen.

During the QSO, each operator transmits for 15 seconds, followed by receiving for 15 seconds. The program is set up with standard QSO messages, so there's not much freeform in the QSO. However, it can be modified slightly to match a special event. A standard QSO will contain CQ, call sign, grid square, signal report, and 73. FT8 allows great DX with weak propagation characteristics. Because of this, it is quite normal to make DX contacts with a small amount of power and during times of marginal propagation. In one afternoon, I had three contacts with operators in three communist countries: Russia R0LFK, China BD4STG, and Cuba CO2QO. Of course, I've had many other DX contacts with operators in countries I've never even heard of before.

I'll admit that operating FT8 is both boring and exciting at the same time. It's like watching grass grow, with a shot of adrenaline thrown in. The computer does most of the work. Once you're set up for a session, the computer handles the radio work, which is the boring part. When a station far away answers your CQ, excitement takes over,

One other interesting web-based program to use in conjunction with WSJT-X (if you have Internet access) is [pskreporter.info](http://pskreporter.info). The program allows you to see where your signals are being heard. One very interesting aspect is seeing on a map how your signals follow the gray-line. I have worked Europe in the morning and Japan and the South Pacific in the afternoon, working the gray-line at both ends of the day. It is a great way of increasing radio operating skills and knowledge of radio wave propagation.

Ham radio has seemingly endless avenues for all of us to pursue our passion. Whether it's phone/voice, CW, Emcom, or the Mesh Network, these are just a few. FT8 is just one more in our arsenal of enjoyable Amateur Radio pursuits. Get radio-active.

February 2022

## **80 meter Operation By Barry K6ZA**

Preface: We are excited that the 80 meter ACS/ARES Tuesday night net at 6:30PM on 3987Khz is hosted right here in Simi Valley !

80 is a tough band to get an antenna deployed for because of the space required for most antennas. Ron K6RIN has solved the space problem with the following design and deployment plan. The following is from Ron and he was loud and clear on his checking last Tuesday on the net.

I look forward to hearing lots of Simi hams on 80, which can be a fun band to operate with lots of stations to work on phone, cw, and digital modes too.

Here is how Ron did it. Enjoy. Barry K6ZA

“My setup involved the use of two 75-Meter Hamsticks, a bracket that puts them in a a dipole configuration (part #MFJ-347), and a fiberglass push-up mast. My mast is the MFJ-1906H, 33’ telescoping fiberglass mast. I used a tripod to hold it. The tripod was given to me by someone who found it in a neighbor’s trash.

This setup makes a fairly resonant antenna with a very narrow usable band. I was able to tune it to an SWR of 1.1 to 1 on 3.985 MHz, and a usable portion of about 15 KHz on either side.

I took photos, but because of the windy weather today, I didn’t want to put it up too high. It would need guying in the wind.

Here are some photos:

February 2022



February 2022



February 2022



February 2022



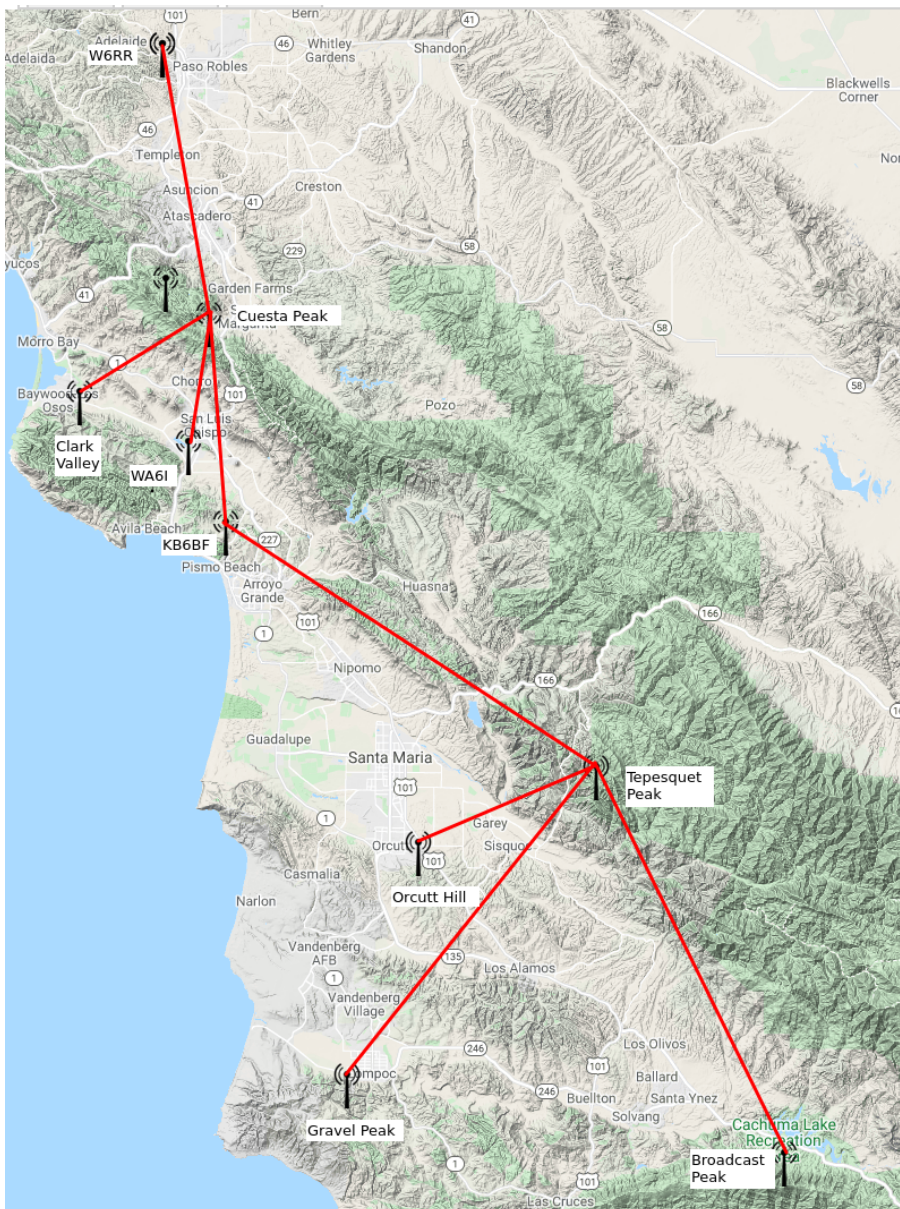
February 2022

## A mesh update from Orv W6BI

Our work on expanding the AREDN ham network in Southern California has slowed down substantially, as it's become harder to gain access to sites that provide the needed coverage. In Ventura County, we still have several areas that aren't covered yet, but until sites become available to provide the needed coverage, I've turned my sights towards the west and north. Santa Barbara has a small network, but getting line of sight paths from Ventura County to Santa Barbara County and beyond has proved problematic.

So over the last few months I've been working with the hams on the Central Coast: CPARC (Cal Poly ARC), SARC (Satellite ARC), Estero ARC, and others to develop a plan to push out a network covering their area. They've responded enthusiastically, and are gathering parts and funding. They hope to begin installation of hilltop nodes sometime in March.

Here's a drawing of the contemplated network path:

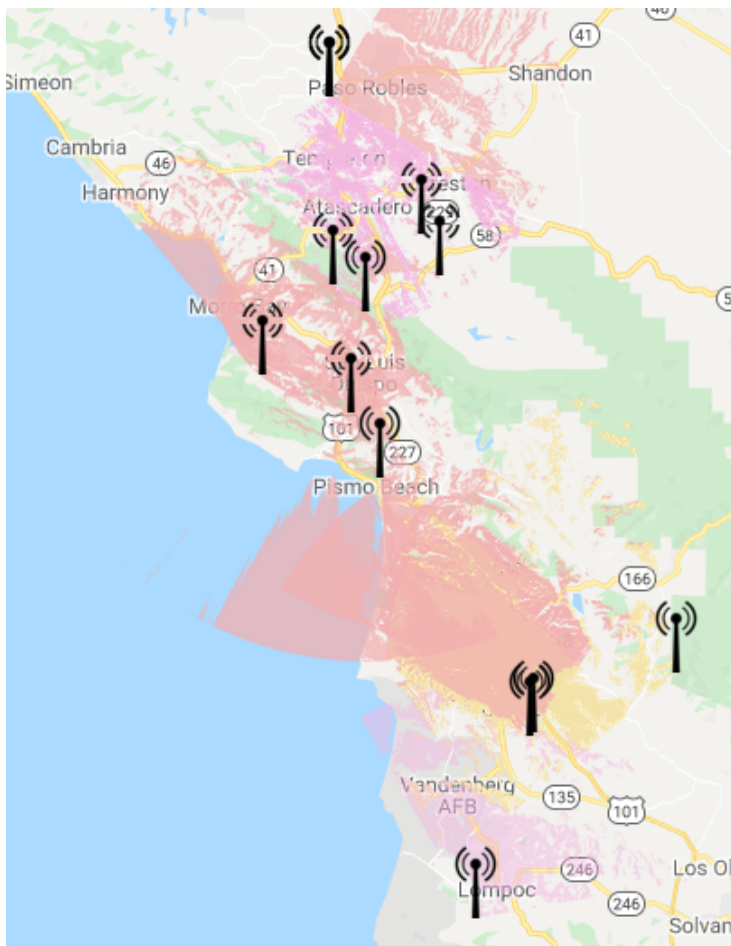


February 2022

Here's a list of sites and the coverage areas, North to South:

- W6RR - Radio Ranch (35.6262, -120.7122) covers Paso Robles, Templeton, Asuncion and parts of Atascadero.
- WA6I's QTH (35.23379, -120.6805) covers the south half of SLO.
- KB6BF's QTH in Pismo Heights covers Pismo Beach, most of Arroyo Grande, Oceano, Bromela, Guadalupe, parts of Nipomo, most of Betteravia, and a small part of Santa Maria
- Tepesquet Peak covers Santa Maria
- Orcutt Hill covers Santa Maria, Betteravia, Guadalupe.
- Clark Valley covers Baywood-Los Osos, Los Osos, Morro Bay and route 1 north to the Abalone Farm.
- Gravel Peak covers Lompoc (northern three-quarters), Vandenberg Village, and Vandenberg SFB.

Here's a map of the estimated coverage areas:



I've also started discussing possible paths extending north from the Central Coast. The goal is to eventually link SoCal and the Bay Area :-)

Orv W6BI

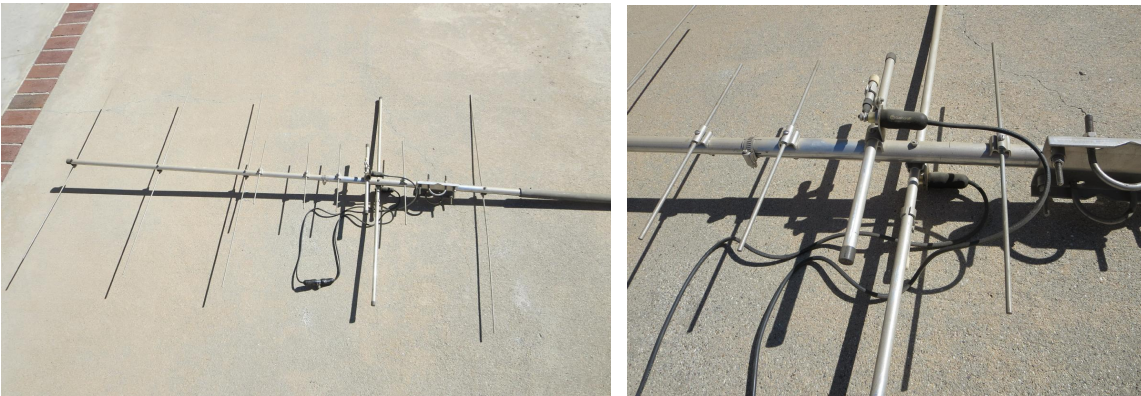
**And our own Mike Tweedy, KV6I, wishes to get the ball rolling on a permanent sales column. Not a requirement, but if you sell something, feel free to donate any portion of the proceeds to the club.**

## **SSARC Marketplace**

This section of the newsletter is for Simi Settler club members to post various used or previously owned items for sale that they may no longer have a need or use of. Please submit a brief description of the sale items (along with a photo if possible) and suggested price to Eric Oberg KE6MLF, the newsletter editor, at least a week before newsletter publication. It is suggested that a portion of each sale be donated to the SSARC treasury to help support the club's several activities. Any items not sold will NOT be carried over to the following month's newsletter unless specifically resubmitted by the seller.

.....

### **CUSHCRAFT A270-10S VHF/UHF ANTENNA**



This antenna, still being produced by Cushcraft that retails for \$210 new offers a combined VHF/UHF antenna in one package. Both the VHF and UHF sections individually feature 5 element Yagis for each band. The T-coupler shown can be connected to a transceiver that outputs both a VHF and UHF signal on the same antenna port, or, alternately, separate coaxes can be connected to each antenna separately. Works great with a TV-type antenna rotor.

Condition: Excellent Price: \$50 OBO. Please contact Mike Tweedy KV6I (805-231-9683)

## **KLM 2-METER YAGI / LOG PERIODIC ANTENNA**



This antenna is an unusual 2-meter antenna in that it has both a Yagi high-gain portion of the antenna combined with a Log Periodic portion of the antenna for wide bandwidth. The antenna is perfect for Field Day operations with an antenna rotator.

Condition: Fair/Good Price: \$25 OBO. Please contact Mike Tweedy KV6I (805-231-9683)

## **ANTENNA ROTATOR**

The antenna rotator and two control boxes and cable shown are perfect for rotating small Yagi-type or Log-Periodic antennas for 2m or 440 MHz operation for operations such as Field Day or at your home QTH.



Condition: Excellent Price: \$25 OBO. Please contact Mike Tweedy KV6I (805-231-9683)

February 2022

## 11-METER CB CAR ANTENNAS



These 11-meter CB magnetic mounted car antennas were originally purchased to be modified for 10-meter operation by shortening the antenna length. Obviously, this was never done but it otherwise provides a great antenna for modification and experimentation. Each antenna provides at least 16 feet of RG-58 coax.

Condition: Never Used Price: FREE ! Please contact Mike Tweedy KV6I (805-231-9683)

February 2022

## MFJ-864 WATTMETER



This MFJ-864 Wattmeter, still being produced by MFJ that retails for \$140 new can measure both forward and reflected power from 1.8 to 60 MHz using two power ranges, 30W and 300W. The frequency covers all the typical HF, VHF and UHF amateur frequencies which makes it perfect for any transmitter capable of up to 300 Watts output.

Condition: Never Used    Price: \$50 OBO. Please contact Mike Tweedy KV6I (805-231-9683)

February 2022

Simi Settlers' Amateur Radio Club Web Page: <http://www.simisetters.org/index.htm>

Simi Settlers' ARC Yahoo Group: <http://groups.yahoo.com/group/SimiSettlersARC>

Mail: P.O. Box 2125 Simi Valley, CA 93062-2125

Simi Settlers' Leadership				
<b>President</b>	Brian Hernandez	KM6MIN	(805) 813-7595	km6min_bh@yahoo.com
<b>Vice President</b>	VACANT			
<b>Secretary</b>	John Percival	WI6O		johnspercival1@gmail.com
<b>Secretary</b>	Ron Nelson (When John is out of town)	K6RIN		rnelson759@sbcglobal.net
<b>Treasurer</b>	Glenn Daly	WA6GNB		gnb.2112@yahoo.com
Committee Chairpersons				
<b>Webmaster</b>	Jim Parker	KJ6LXJ	(805) 368-6745 cell	kj6lxj@gmail.com
<b>Newsletter</b>	Eric Oberg	KE6MLF	(805) 791-0745 cell	ericoberg1@gmail.com
<b>Membership</b>	Jim Parker	KJ6LXJ	(805) 368-6745 cell	kj6lxj@gmail.com
<b>PIO</b>	Linda Parker		(805) 558-1731 cell	kj6lxj@gmail.com
<b>Raffle Prizes</b>	Rick Galbraith	W6DQE	(805) 433-4513 cell	rick@keymaterial.com
<b>Youth Coordinator</b>	VACANT			
<b>Historian</b>	Mike Tweedy	KV6I	(805) 231-9683 cell	mtweedy@roadrunner.com
<b>Net Coordinator</b>	Brian Hernandez	KM6MIN	(805) 813-7595	km6min_bh@yahoo.com
<b>Food Services</b>	Bill Everett	KI6KSV		ki6ksv@gmail.com
<b>Room Coordinator</b>	Linda Parker		(805) 558-1731 cell	kj6lxj@gmail.com
Elmers and Members at Large				
<b>Past-President</b>	Bill Woods	AB6BW	(818) 694-9019 cell	AB6BW1@gmail.com
<b>Advisor</b>	Bill Everett	KI6KSV		wildpoky45@earthlink.net
<b>Advisor</b>	Jim Hutchinson	KI6MZ		jhutch17@adelphia.net

February 2022

# Simi Settlers Amateur Radio Club

P.O. Box 2125 Simi Valley, Ca 93062-2125 --- ([www.simisettlers.org](http://www.simisettlers.org))

## Membership Application



### Type of Application:

New Member ☐  
Renewal ☐

### Type of Membership:

Individual (\$18/yr) ☐  
Family (\$20/yr) ☐

Name: \_\_\_\_\_ Day & Month of Birth: \_\_\_\_\_  
(Omit year)

Call: \_\_\_\_\_ Class: \_\_\_\_\_ ARRL: Yes ☐ No ☐

Address: \_\_\_\_\_ City: \_\_\_\_\_ State: \_\_\_\_\_ Zip: \_\_\_\_\_

Phone: (\_\_\_\_) \_\_\_\_\_ Alt. Phone: (\_\_\_\_) \_\_\_\_\_

E-Mail Address: \_\_\_\_\_

### Additional Family Members:

Name: \_\_\_\_\_ Day & Month of Birth: \_\_\_\_\_  
(Omit year)

Call: \_\_\_\_\_ Class: \_\_\_\_\_ ARRL: Yes ☐ No ☐

Name: \_\_\_\_\_ Day & Month of Birth: \_\_\_\_\_  
(Omit year)

Call: \_\_\_\_\_ Class: \_\_\_\_\_ ARRL: Yes ☐ No ☐

Name: \_\_\_\_\_ Day & Month of Birth: \_\_\_\_\_  
(Omit year)

Call: \_\_\_\_\_ Class: \_\_\_\_\_ ARRL: Yes ☐ No ☐

Badges requested: Yes ☐ No ☐ How many? \_\_\_\_\_ X \$18.00 = \$ \_\_\_\_\_

Name (s) Call(s): \_\_\_\_\_

Shirts requested: Yes ☐ No ☐ How many? \_\_\_\_\_ X \$35.00 = \$ \_\_\_\_\_

Name (s) Call(s) Size(s) (Sm, Med, L, XL, etc): \_\_\_\_\_

Jackets Requested: Yes ☐ No ☐ How many? \_\_\_\_\_ X \$88.00 = \$ \_\_\_\_\_

Name (s) Call(s) Size(s) (Sm, Med, L, XL, etc): \_\_\_\_\_

### OFFICE USE ONLY

Application type: New ☐ Renewal ☐ Membership type: Individual ☐ Family ☐

Date Received: \_\_\_\_\_ Amount Received: \_\_\_\_\_ Database completed: \_\_\_\_\_

Badges and Shirts ordered: \_\_\_\_\_

February 2022