



Simi Settlers' Amateur Radio Club

Short Circuit

1	Timely Information
2	Nets of Interest ACS/ARES Corner
3	Member Updates
4	The Marketplace
5	Simi Settlers' Leadership
6	Membership Form

The next **meeting** is at the

Simi Senior Center,

3900 Avenida Simi, Simi Valley.

Thursday August 14, 2025 at 7:00 PM.

The next **Pizza** Night is at

Toppers Pizza, 2408 Erringer Rd, Simi Valley

August 7 at 6:00 PM

The next ACS / ARES event is the **Wings over Camarillo** air show, August 16 and 17.

YOU too can join in the fun! The contact is Eric Schwarm at eric@schwarm.us

All you need is a handheld radio.

Up and close to the aircraft, with a pancake breakfast!

August 2025

Things to discuss at our July meeting:

220 repeater? from Orv W6BI

A couple of weekends ago I (Orv), Frank KI6OQ, Kerwyn N6YHX and Bill AB6BW spent some time on the roof of the Simi Valley PD. We had a couple of tasks to do: Bill and Kerwyn did some investigation into why the HF wire antenna had a high SWR, Bill found that the 1:1 UNUN balun was open. It's been removed from the rooftop and will be replaced by something better soon.

While they were doing that Frank and I disassembled the 224.060 repeater in preparation for taking it down and troubleshooting its low transmit audio. It takes a lot less time to take something apart than to assemble it, so in a few minutes we were ready to haul the parts down to ground level.

Since then, I've had the cavities checked out (they were fine - in tune), but haven't done much else. We don't want to put it back up on the roof of the PD because the city now requires us to be accompanied by their Communication Systems Coordinator, and he's not very available. We'd need to find another place to put it when it's repaired.

So the question is, do we really need it on the air? How many people have 220 radios these days? Repairs to the repeater probably will take a few hours, but is it worth the effort if few folks are going to use it? Inquiring minds want to know!

Orv W6BI

The new 440 repeater?

Move the Sunday night net?

Split the Sunday net between check in (2 meter)?

Open discussion / rag chew (70 cm)?

August 2025

A selection of NETS

Monday	Condor Connection (Plays Newsline)	7:00 PM	Frazier Mountain 224.720-1.6 MHz PL156.7
Tuesday	County ACS HF net	6:30 PM	Summer 7.242 +/- Winter 3.987 +/-
	ACS Area 1 - Simi Simplex net	6:45 PM	145.510 MHz Simplex
	ACS Area 1 - Simi Repeater net	7:00 PM	Simi Repeater 146.805 -0.6 MHz PL 100.0
	ATN-CA Net	7:30 PM	https://www.atn-tv.com
	LSB Net	8:00 PM	3.908 MHz
Wednesday	Channel Islands chapter 10-10 International	10:00 AM 6:00 PM	28.34 MHz
	Mesh VOIP Net* Voice / video / data	8:00 PM	2.4/5.8 GHz Mesh
Thursday	LSB Net	8:00 PM	3.908 MHz
Friday			
Saturday	SSARC SSB HF Net	8:30 AM	7.240 (+ or - QRM/N) 40 meter
	CW-QRP	9:00 AM	7.032 MHz
	Quad Squad net	1:00 PM	21.365 MHz
Sunday	The Newbie net	7:00 PM	Bozo Repeater 147.885 –0.6 MHz PL 127.3
	LSB Net	8:00 PM	3.908 MHz
	SSARC 2 Meter Net**	8:30 PM	Simi Repeater 146.805 -0.6 MHz PL100.0

Additional listings of **MORE** local nets can be found on the CVARC web site at: <http://www.cvarc.org>

* For more information, see <http://www.pvarc.club/mesh/mesh-applications/>

Our Sunday night control 8:30 on the Simi Repeater:

Aug 3 Kevin KD6UTC
 10 Matt N3AR
 17 Ron K6RIN
 24 Kerwyn N6YHX
 31 Matt KN6SEC

August 2025

ACS/ARES Corner

Frank Valdez KI6OQ is the Area 1 Emergency Coordinator

We are always looking for ACS members that would like to become Net Controllers. You will receive hands-on training at the Simi Valley PD (where we normally conduct the Weekly Net). It is both fun and at times challenging. You will gain valuable experience in running a controlled Net as well as becoming more than just familiar with the equipment in the Radio Room at the PD. If you would like to volunteer for this, just message Frank Valdez at frankki6oq@gmail.com.



If anyone is interested in how to set up your own packet station, RMS Winlink station, or a Mesh Node, contact Frank, he will point you in the right direction.

The **Area 1** (Simi Valley) net occurs **Tuesdays**. Generally it is just a brief check in, but usually some news about upcoming events is passed on. **Stop by and say Hi**. You do not have to do anything other than check in to test out your simplex or repeater connection.

The Tuesday **HF net** during summer months is on 7.242 +/- at **6:30 PM**.

During the winter, it is back to 3.987 lower side band.

The Tuesday **simplex net** is on 145.510 at **6:45 PM**.

The Tuesday **repeater net** is on the 146.805 (-0.6 MHz, PL 100) repeater at **7:00 PM**.

NOTE: Please be advised that we hold the Tuesday **countywide** net at 19:30 (7:30PM) on the Sulphur Mountain WD6EBY repeater 145.200, minus 600 KHz offset, CTCSS of 127.3. Until further notice, this will be our standard frequency for countywide communications.

Visit vccomm.org for more updates.

For the Tuesday night nets:

29-Jul-25 Ron Nelson K6RIN
5-Aug-25 Eric Oberg KE6MLF - ORT
12-Aug-25 Bill Woods AB6BW
19-Aug-25 Dante Smith W6JCQ
26-Aug-25 Lisa Trent KK6AKR

August 2025

Member Updates

Field Day photos from Donnie KJ6TTN

First up is Frank and Matt.



Now, here is Frank and Matt with coffee. Better, yes?



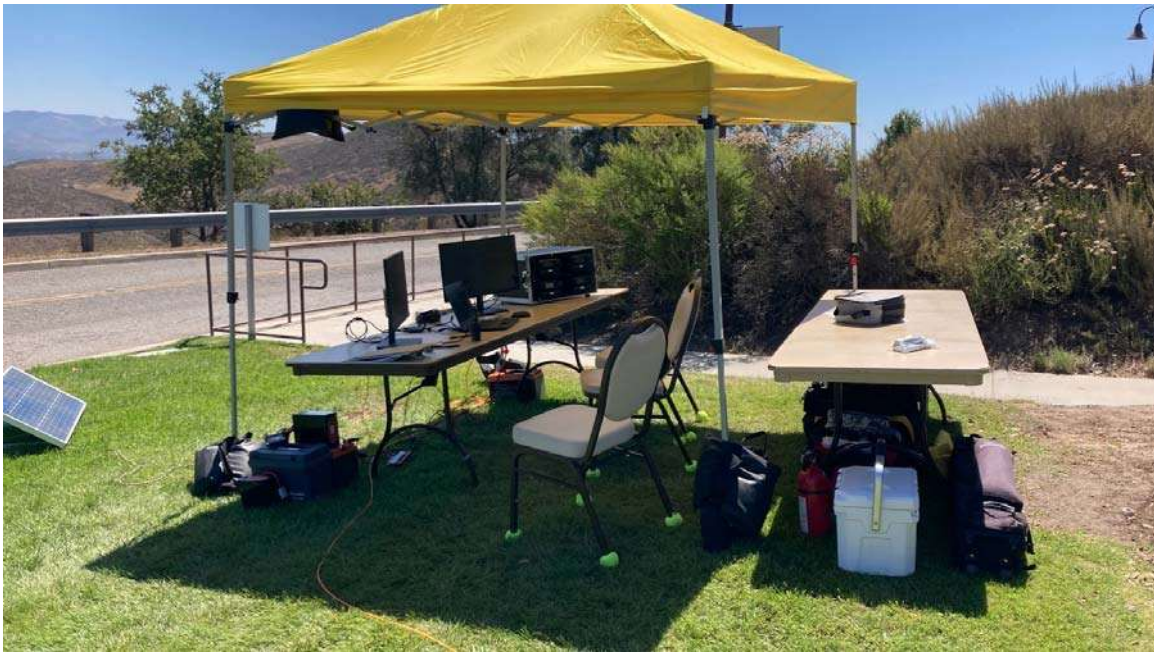
August 2025



August 2025



August 2025



August 2025

Reset Radio

NM

N6R Score - 3,830 Points

×

Contest: FD

Band	Mode	QSOs	Pts	Pt/Q
7	LSB	441	441	1.0
14	FT8	193	386	2.0
14	USB	631	631	1.0
21	USB	66	66	1.0
28	FT8	97	194	2.0
28	USB	109	109	1.0
50	FT8	18	36	2.0
144	FM	43	43	1.0
420	FM	9	9	1.0
Total	Both	1607	1915	1.2

Score: 3,830

1 Mult = 1.0 Q's

Rescore

August 2025

Saddle Peak SOTA and POTA Activation By Ron K6RIN

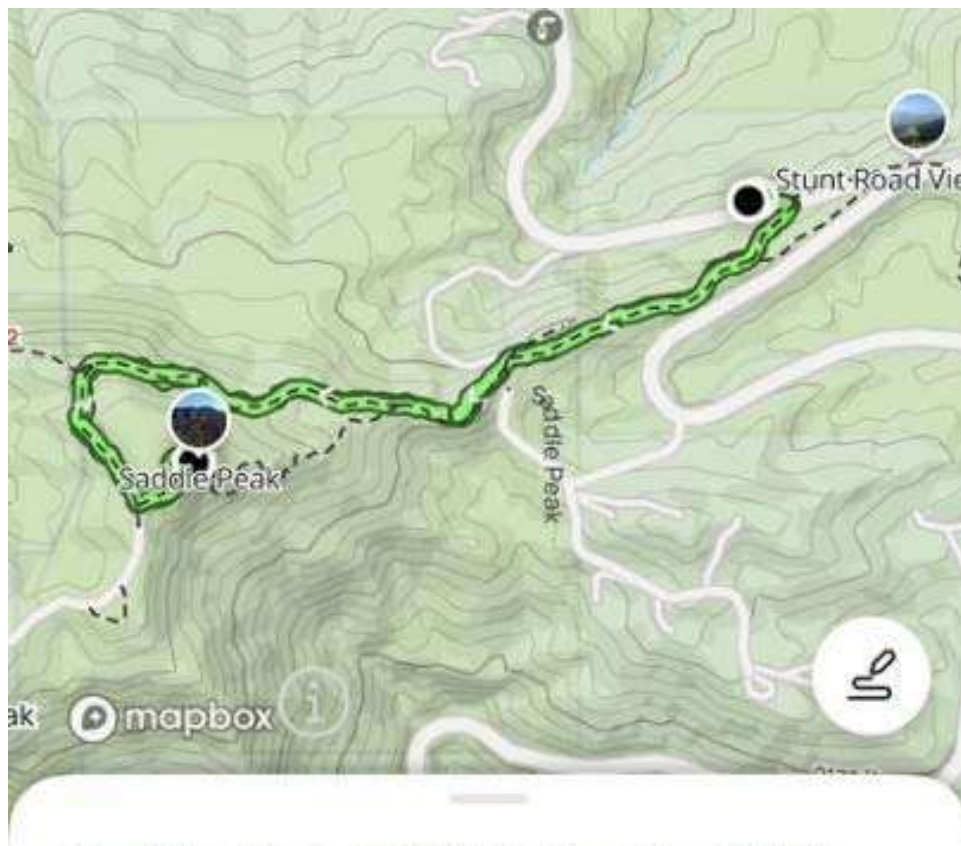
On Saturday, July 19th, three hams from the Simi Settlers Club set out on a hike to the top of Saddle Peak in the Santa Monica Mountains with a whole lot of gear to complete a SOTA (Summits on the Air) (W6/CT-274) and POTA (Parks on the Air) (US-0648) ham radio activation. These included myself (Ron K6RIN), Kerwyn Schimke N6YHX, and Bill Woods AB6BW.

We reached the summit after hiking 0.89 mile and 453' of vertical elevation. The summit consisted of a very large open area that was perfect for all three station setups. Kerwyn used a very small QRP radio, capable of transmitting just under 5 watts, with an end-fed half-wave wire antenna. Bill used his Elecraft KX2 with an inverted L end-fed half-wave wire antenna. Ron used his Yaesu FT-891 and a vertical antenna with multiple counterpoise wires.

Radio conditions were a bit marginal, but the bands were very busy with several POTA stations all over the US and Canada. We managed to make several Park-to-Park radio contacts, and a few Summit-to-Summit contacts as well. Bill concentrated on digital FT8 operation. He worked through some challenging technical issues and was rewarded with a solid FT8 contact on his QRP rig.

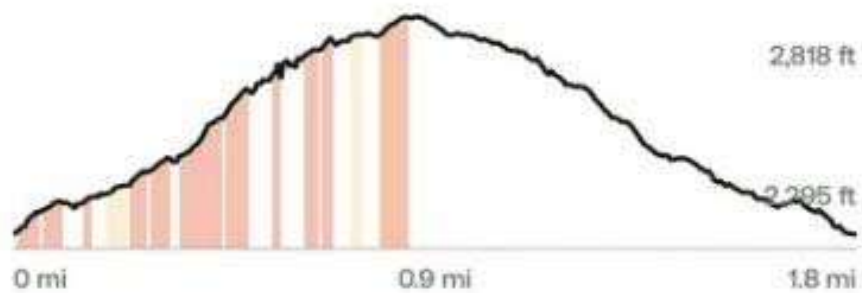
Being that it was a Saturday, and that trails in the Santa Monica Mountain Conservancy area are quite popular, several hikers came along and expressed their curiosity toward our operation. Because of this, we were afforded the opportunity to be good ambassadors for the ham radio hobby. One of the more interesting public contacts we had were two men on horseback. They came riding up at a fast gallop and had many questions about our operation.

Here are a few photos from the day:



Saddle Peak SOTA Activation W6/ CT-274 ›

1.77 mi • 453 ft gain • Est. 1h 13m



August 2025



August 2025



August 2025



August 2025



August 2025

Field Day photos from Richard KN6RCC



(ed: Mike Kort is in the dark blue shirt, a representative of the County Supervisors office.)

August 2025



August 2025



August 2025



August 2025



August 2025



August 2025



August 2025



August 2025



August 2025



August 2025



August 2025



August 2025



August 2025



August 2025



August 2025



August 2025



August 2025



August 2025

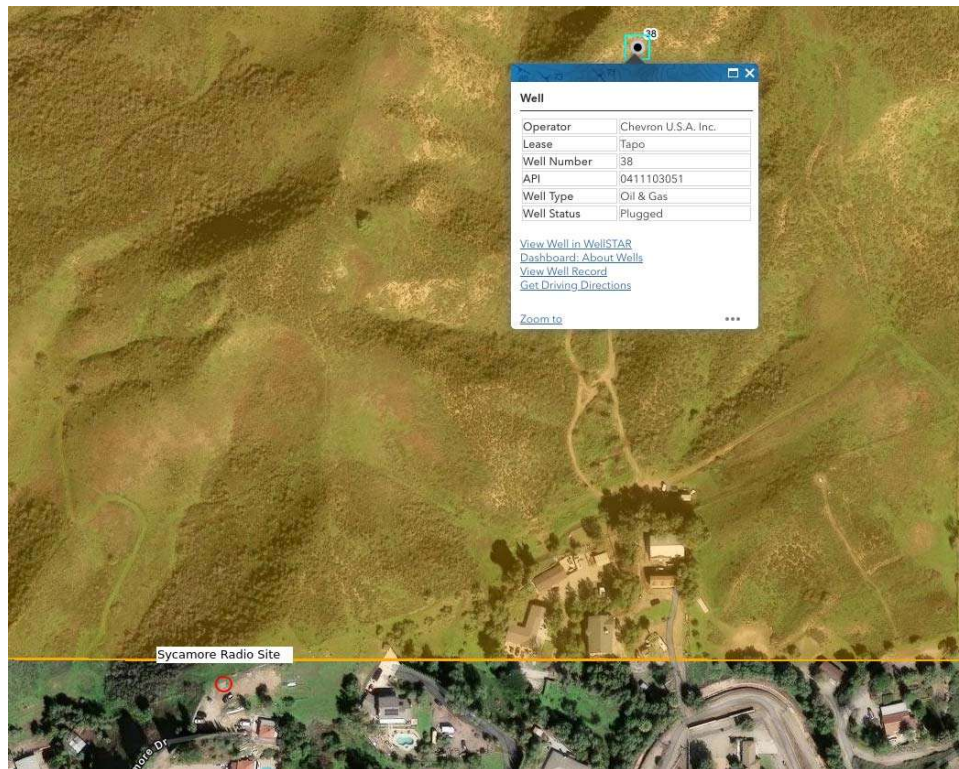


August 2025

Digging for Oil from Orv W6BI

We're preparing to install solar panels at the Sycamore (SimiNorth) radio site. We need to dig holes for the four support posts. However - there's an oil line passing through that area. How do we know? Because of the 4" gate valve sticking out of the ground 15-20 feet east of the current enclosure, I was a bit worried about it. So I asked my AI how to find information on abandoned oil lines. It suggested I start at California Department of Conservation's Well Finder app.

It didn't take long for me to locate the closest well to the radio site.



- It's located about 1,200' NE of the SimiNorth radio site. (at 34.29649353 -118.74104309). Nothing visible there on Google Maps, though.
- Started drilling May 22, 1920. Drilled to 2,549 feet.
- It's hard to interpret the records. It appeared to be a problematic well, so unknown as to how productive it was.
- The well was formally abandoned and sealed in 1973

So while the pipeline was probably laid to support Tapo Well 38, it doesn't appear that it carried oil for very long. If we find that one of our post holes would impinge on the old line, we'll just shift the holes one way or another.



August 2025

Internet Resources

simisettlers.org - us!

cvarc.org - Conejo Valley Amateur Radio Club

k6mep.org - Ventura County Amateur Radio Club

vcars.org - Ventura County Amateur Radio Society

pvarc.club - The home of many of the counties repeaters

arednmesh.org - Amateur Radio Emergency Data Network

vccomm.org - Ventura County ACS / ARES

www.arrl.org - American Radio Relay League

archive.org/details/simi-settlers-arc - Our old newsletters!

qrz.com - forums, for sale, articles - **Create your profile here!**

eham.net - forums, for sale, articles (kind of a zombie site)

www.theborednet.net - a local bulletin board including net schedules and **stuff** for sale!

Under the **groups.io** banner (a free account is required):

groups.io/g/SimiSettlers/messages - A great place to post

groups.io/g/SIMI-VALLEY-HAMMESHNET/messages

vc-accs.groups.io/g/main/messages

vc-accs.groups.io/g/area-1/messages

SSARC Marketplace

This section of the newsletter is for Simi Settler club members to post various used or previously owned items for sale that they may no longer have a need or use of. Please submit a brief description of the sale items (along with a photo if possible) and suggested price to Eric Oberg KE6MLF, the newsletter editor, at least two days before newsletter publication. It is suggested that a portion of each sale be donated to the SSARC treasury to help support the club's several activities. The term "OBO" means "Or Best Offer" and serves only as a starting point in negotiating a fair price.

.....

LAFAYETTE RADIO MODEL TE-50 TUBE TESTER



This portable tube tester from Lafayette Radio is perfect for testing vacuum tubes from classic radios and television receivers sold back in the day. It has eight tube sockets capable of testing standard Octal, Loctal, 7-pin miniature, 9-pin miniature types as well as 9- and 12-pin Compactron tubes and nuvistor tubes that were popular back in the 1950's and 1960's. Tests include leakage, shorts and tube emission (e.g.- gain or μ -measurements). The tester includes a slide-out chart drawer plus supplemental charts for newer-type tubes listing the required selector switch and slide switch settings for each tube under test including a test clip for testing tubes with high-voltage anode top caps such as those used for horizontal sweep circuits of earlier televisions. Similar Lafayette Model TE-50 Tube Testers are listed on E-Bay for \$99.99 or more.

Condition: Very Good Price: \$5 or OBO. Contact Mike Tweedy KV6I (805-231-9683)

From Glenn WA6GNB

GrandStream # 1620/1625 telephone for sale. New – still in the original box. Compatible with our MESH system. \$30.00 Contact Glen at gnb.2112@yahoo.com

From Orv W6BI

(orv.beach@gmail.com)

Signalink USB - interface between radio and computer for digital modes - \$75



From Joe W6JWP

MFJ 259 Antenna Analyzer 1.8 to 170MHz \$100.00 OBO.

Good working unit with extras.



August 2025



Contact joe.w6jwp@gmail.com

August 2025

Anycubic Mega Pro 3D FDM Printer w/Laser Engraving

Upgraded flexible magnetic steel bed.

The power supply and extruder fans make noise when first turned on but it goes away after about 30 seconds.

Includes glass bed, tools, spare extruder and nozzles, laser head and protective glasses.

\$75.00 or best offer.



August 2025



Contact joe.w6jwp@gmail.com

August 2025

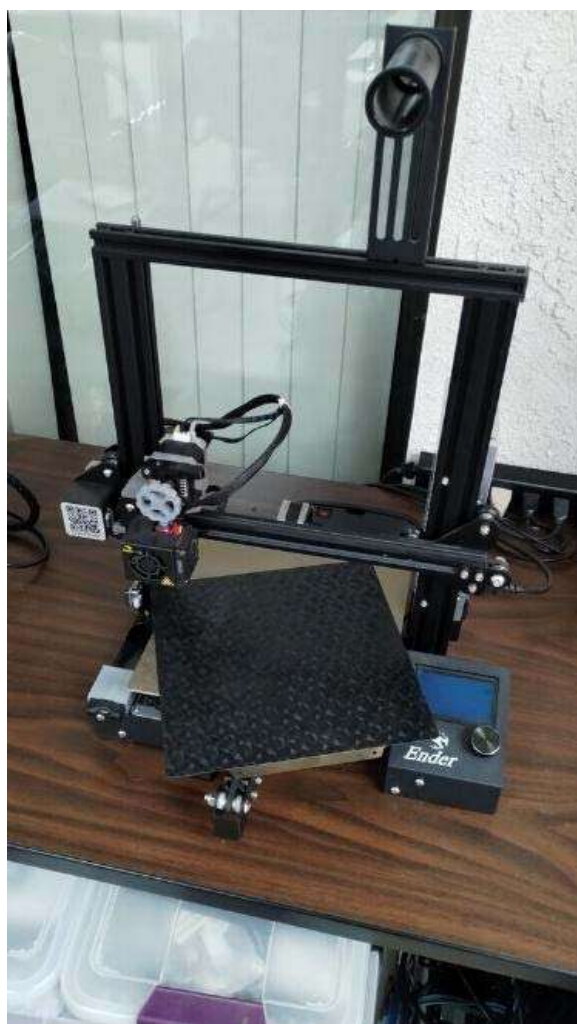
Ender 3 v1 3D FDM Printer

Modified for direct drive.

Upgraded flexible magnetic steel bed. Includes a spare textured steel bed.

Good basic machine

\$75.00 or best offer.



Contact joe.w6jwp@gmail.com

August 2025

Simi Settlers' Amateur Radio Club Web Page: <http://www.simisetters.org/index.htm>
 Simi Settlers' ARC Yahoo Group: <http://groups.yahoo.com/group/SimiSettlersARC>
 Mail: P.O. Box 2125 Simi Valley, CA 93062-2125

Simi Settlers' Leadership				
President	Brian Hernandez	KM6MIN	(805) 813-7595	km6min_bh@yahoo.com
Vice President	Matt Kaufman	N3AR	(818) 425-0920	matt.d.kaufman@gmail.com
Secretary	Ron Nelson	K6RIN	(805) 797-6315	rnelson759@sbcglobal.net
Treasurer	Matt Griffin	KN6SEC	(661) 361-5955	mgriffi79@yahoo.com
Committee Chairpersons				
Webmaster	Matt Griffin	KN6SEC	(661) 361-5955	mgriffi79@yahoo.com
Newsletter	Eric Oberg	KE6MLF	(805) 791-0745	ericoberg1@gmail.com
Membership	Jim Parker	KJ6LXJ	(805) 368-6745	kj6lxj@gmail.com
PIO	VACANT			
Raffle Prizes	Matt Griffin	KN6SEC	(805) 433-4513	mgriffi79@yahoo.com
Youth Coordinator	VACANT			
Historian	Mike Tweedy	KV6I	(805) 231-9683	mtweedy@roadrunner.com
Net Coordinator	Brian Hernandez	KM6MIN	(805) 813-7595	km6min_bh@yahoo.com
Food Services	VACANT			
Room Coordinator	VACANT			
Elmers and Members at Large				
Past-President	Bill Woods	AB6BW	(818) 694-9019	AB6BW1@gmail.com
Advisor	Bill Everett	KI6KSV		ki6ksv@gmail.com
Advisor Morse Code	John Percival	WI6O		johnspercival1@gmail.com
Advisor Mesh	Orv Beach	W6BI		orv.beach@gmail.com

August 2025

Simi Settlers Amateur Radio Club

P.O. Box 2125 Simi Valley, Ca 93062-2125 --- (www.simisetters.org)

Membership Application



Type of Application:

New Member ☐ ☐
Renewal ☐ ☐

Type of Membership:

Individual (\$25/yr) ☐ ☐
Family (\$30/yr) ☐ ☐

Name: _____ Day & Month of Birth: _____
(Omit year)

Call: _____ Class: _____ ARRL: Yes ☐ ☐ No ☐ ☐

Address: _____ City: _____ State: _____ Zip: _____

Phone: (____) _____ Alt. Phone: (____) _____

E-Mail Address: _____

Additional Family Members:

Name: _____ Day & Month of Birth: _____
(Omit year)

Call: _____ Class: _____ ARRL: Yes ☐ ☐ No ☐ ☐

Name: _____ Day & Month of Birth: _____
(Omit year)

Call: _____ Class: _____ ARRL: Yes ☐ ☐ No ☐ ☐

Name: _____ Day & Month of Birth: _____
(Omit year)

Call: _____ Class: _____ ARRL: Yes ☐ ☐ No ☐ ☐

Badges requested: Yes ☐ ☐ No ☐ ☐ How many? _____ X \$18.00 = \$ _____

Name (s) Call(s): _____

Shirt Printing: Yes ☐ ☐ No ☐ ☐ How many? _____ X \$25.00 = \$ _____

Name (s) Call(s): _____ (Self Supplied Polo Shirt, no emblem or pocket)

Hats Requested: Yes ☐ ☐ No ☐ ☐ How many? _____ X \$20.00 = \$ _____

Name (s) Call(s): _____

OFFICE USE ONLY

Application type: New ☐ ☐ Renewal ☐ ☐ Membership type: Individual ☐ ☐ Family ☐ ☐

Date Received: _____ Amount Received: _____ Database completed: _____

Badges and Shirts ordered: _____

August 2025